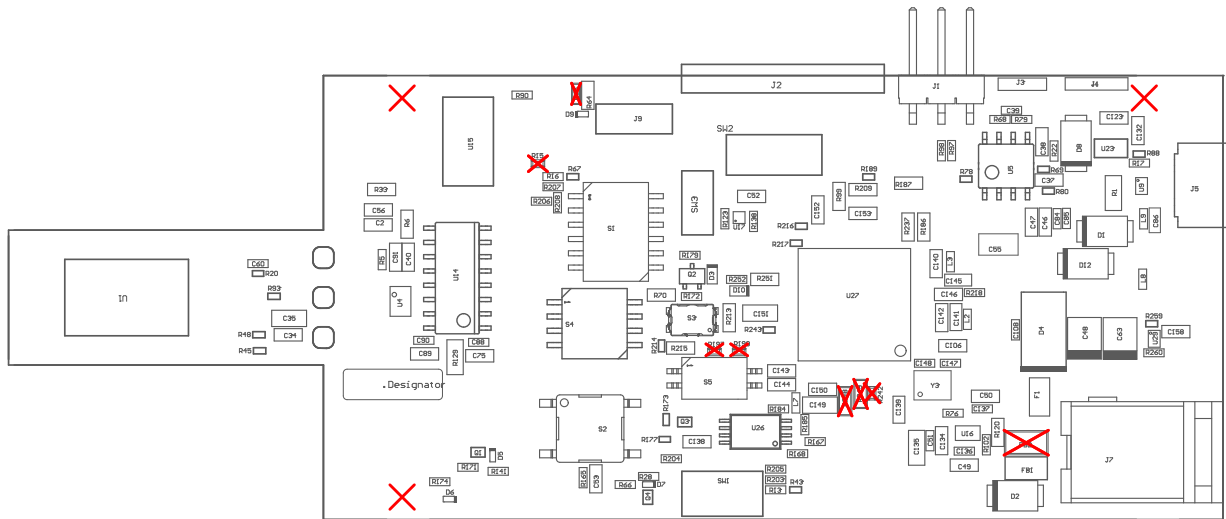


ZZ1 ■Install label in silkscreened box after final wash. Text shall be 8 pt font. Text shall be per the Label Table in the PDF schematic.
 ZZ2 ■These assemblies are ESD sensitive, ESD precautions shall be observed.
 ZZ3 ■These assemblies must be clean and free from flux and all contaminants. Use of no clean flux is not acceptable.
 ZZ4 ■These assemblies must comply with workmanship standards IPC-A-610 Class 2, unless otherwise specified.
 ZZ5 ■INDICATION FOR COMPONENTS D* ARE GIVEN AT THEIR CATHODE SIDE.

COMPONENTS MARKED 'DNP' SHOULD NOT BE POPULATED.
 ASSEMBLY VARIANT: 002_AWR



PCB VIEWED FROM TOP SIDE	BOARD #: PROC177	REV: B	SUN REV: Not in version control
Assembly Layer Top	TID #: N/A		
PLOT NAME = Top Assembly Drawing	GENERATED : 18-01-2024 20:51:07	TEXAS INSTRUMENTS	

